



PRODUCT RANGE AW23/24

EVOLUTION

The fifth generation of a slim cut three-layer GORE-TEX® Pro jacket brings extreme freedom of movements for ice climbing, extreme skiing, and other outdoor activities.

Wide use of seamless lamination technology means less weight and volume.

- Anatomically shaped sleeves
- 13 mm "Micro Tape"
- Aqualock front zipper
- New construction of big hood with laminated brim and one-touch adjusting
- Integrated ventilation system with WaterTight™ zippers
- One-touch cuffs adjusting
- AquaGuard® Vislon front zipper
- Draw cord at the hips
- Two outer pockets, laminated inner pocket
- Waistcord and removable seamless inner snow barrier at the waist
- Anatomic hem

Material: 3-Layer GORE-TEX® Pro

Weight: (M) 615 g

Ret: < 6,00 m².Pa.W-1

Sizes: S M L XL XXL



LEMON CURRY / CAVIAR BLACK



MAJOLICA



CAVIAR BLACK



PUREED PUMPKIN / FIRED BRICK

RAPTOR

The flagship product of the company
made of three-layer GORE-TEX® Pro.

Suitable mainly for use in mountaineering's
potentially extreme conditions.

- Stronger material as reinforcement
- Integrated ventilation system with WaterTight™ zippers in the armpits
- Laminated zipper garages
- AquaGuard® Vislon front zipper
- Anatomically shaped sleeves
- One-touch cuff adjustment
- Two outer pockets, laminated inner pocket, shoulder pocket
- Big hood with one-touch adjusting
- Draw cord at the hips
- Seamless waistcord
- Removable seamless inner snow barrier at the waist
- Laminated brim
- 13 mm "Micro Tape"
- Anatomic hem

Material: 3-Layer GORE-TEX® Pro

Weight: (M) 569 g

Ret: < 6,00 m².Pa.W⁻¹

Sizes: S M L XL XXL



NAUTICA BLUE / CAVIAR BLACK



INCA GOLD / MAJOLICA



AURA ORANGE / FIRED BRICK

RAPTOR WM'S

A women's version of the Raptor Jacket made of three-layer GORE-TEX® Pro.

Suitable mainly for mountaineering's potentially extreme conditions. Stronger material as reinforcement

- Stronger material as reinforcement
- Integrated ventilation system with WaterTight™ zippers in the armpits
- AquaGuard® Vislon front zipper
- Laminated zipper garages
- Anatomically shaped sleeves with one-touch cuff adjusting
- Two laminated outer pockets, laminated inner pocket
- Big hood with one-touch adjusting
- Draw cord at the hips
- Seamless waistcord
- Removable seamless inner snow barrier at the waist
- Laminated brim
- 13 mm "Micro Tape"
- Anatomic hem

Material: 3-Layer GORE-TEX® Pro

Weight: (M) 497 g

Ret: < 6,00 m².Pa.W⁻¹

Sizes: S M L XL



INCA GOLD / MAJOLICA



AURA ORANGE / FIRED BRICK



NAUTICA BLUE / TURKISH TILE

STINGER PRO

A new generation of mountaineering jacket, made of reliable, lightweight three-layer GORE-TEX® Pro

- Integrated ventilation system with WaterTight™ zippers in the armpits
- 13 mm "Micro Tape"
- AquaGuard® Vislon front zipper
- Laminated brim
- Big hood with one-touch adjusting
- Anatomically shaped sleeves with one-touch adjusting
- Two outer pockets, laminated inner pocket
- Draw cord at the hips
- Anatomic hem

Material: 3-Layer GORE-TEX® Pro

Weight: (M) 441 g

Ret: < 5,00 m².Pa.W⁻¹

Sizes: S M L XL XXL



INCA GOLD / MAJOLICA



NAUTICA BLUE



AURA ORANGE / MAJOLICA



MAJOLICA

STINGER PRO WM'S

A women's version of the lightweight mountaineering jacket made of three-layer GORE-TEX® Pro.

An excellent combination of minimalist functional design and lightweight fabric.

- Integrated ventilation system with WaterTight™ zippers in the armpits
- 13 mm "Micro Tape"
- AquaGuard® Vislon front zipper
- Laminated brim
- Big hood with one-touch adjusting
- Anatomically shaped sleeves with one-touch adjusting
- Two outer pockets, laminated inner pocket
- Draw cord at the hips
- Anatomic hem

Material: 3-Layer GORE-TEX® Pro

Weight: (M) 395 g

Ret: < 5,00 m².Pa.W⁻¹

Sizes: S M L XL



CAPRI BREEZE



INCA GOLD



AURA ORANGE

STINGER

A very lightweight and packable back-up jacket made of the latest generation two-layer GORE-TEX® with Paclite® Plus technology.

- AquaGuard® Vislon front zipper
- Big hood with laminated brim and one-touch adjusting
- Two outer pockets
- Integrated ventilation system with WaterTight™ zippers in the armpits
- Anatomically shaped sleeves with Velcro® adjusting
- Draw cord at the hips
- Anatomic hem
- 13 mm "Micro Tape"

Material: 2-Layer GORE-TEX® Paclite® Plus

Weight: (M) 296 g

Ret: < 6,00 m².Pa.W⁻¹

Sizes: S M L XL XXL



ASPHALT / CAVIAR BLACK



CAVIAR BLACK



MYCONOS BLUE / CAVIAR BLACK



BRONZE BROWN / CAVIAR BLACK

STINGER WM'S

A women's version of lightweight and packable back-up jacket made of the latest generation two-layer GORE-TEX® with Paclite® Plus technology.

- AquaGuard® Vislon front zipper
- Big hood with laminated brim and one-touch adjusting
- Two outer pockets
- Integrated ventilation system with WaterTight™ zippers in the armpits
- Anatomically shaped sleeves with Velcro® adjusting
- Draw cord at the hips
- Anatomic hem

Material: 2-Layer GORE-TEX® Paclite® Plus

Weight: (M) 278 g

Ret: < 6,00 m².Pa.W⁻¹

Sizes: S M L XL



ASPHALT



MYKONOS BLUE



BRONZE BROWN

EVOLUTION PANTS

Mountaineering pants with removable backside (without having to unbuckle the shoulder straps). Made of three-layer GORE-TEX® Pro.

They are suitable for the most demanding activities such as mountaineering and extreme skiing.

- Two outer pockets
- Two cargo pockets with integrated phone/GPS pocket
- WaterTight™ zippers with two sliders
- Velcro™ adjustment around ankle
- Trouser-leg finished with interior gaiters
- Quick adjust suspenders
- 13 mm "Micro tape"
- Reinforced ankles

Material: 3-Layer GORE-TEX® Pro

Weight: (M) 677 g

Ret: < 6,00 m².Pa.W⁻¹

Sizes: S M L XL XXL



CAVIAR BLACK

POWDER PANTS

**Pants with elevated waist made of GORE-TEX®
Infinium™ WINDSTOPPER®.**

Suitable for all kinds of winter activities such as powder skiing,
ski touring or mountaineering.

- Two outer pockets, two cargo pockets with integrated inner phone pocket
- Two pockets on the elevated front part
- Elevated waist and front part made of air-permeable stretch fabric
- Adjustable suspenders
- Long zippered thigh ventilation with integrated inner mesh fabric against snow penetration
- Anatomically shaped knees
- Reinforced ankles and trouser hem
- Trouser-leg finished with interior snow gaiters
- Short zippers on pants allow to fit them over ski boots

Material: 3-Layer GORE-TEX Infinium™ WINDSTOPPER®

Weight: (M) 707 g

Ret: < 5,00 m².Pa.W⁻¹

Sizes: S M L XL XXL



CAVIAR BLACK

SVALBARD

A new version of popular technical long zipper jacket made of GORE-TEX® Infinium™ and insulated with CLIMASHIELD® Apex.

Very warm jacket suitable for the widest range of outdoor activities in potentially cold conditions.

- WaterTight™ front zipper
- Anatomically shaped sleeves
- Three outer pockets
- Three inner pockets
- Adjustable hood with inner collar
- Anatomic draw cord hem
- Packable into the inner pocket

Material: 2-Layer GORE-TEX® Infinium™

Insulation: Climashield® Apex 100 g/m²

Weight: (M) 657 g

Sizes: S M L XL XXL



CLIMASHIELD®



ASPHALT



MYKONOS BLUE



CAVIAR BLACK



KALAMATA



BRONZE BROWN

KETIL

Innovated long zipper hooded jacket made of synthetic Climashield® Apex insulation. A model used by the Mountain Rescue Service.

Lightweight, warm and packable jacket.

- Three outer pockets, three inner pockets
- Anatomically shaped sleeves with soft elastic hem
- Anatomic draw cord hem
- Anatomically shaped hood with elastic hem
- Packable into the inner pocket

Material: Pertex Quantum Air
100% Nylon 40D miniripstop

Insulation: Climashield® Apex 67 g/m²

Weight: (M) 442 g

Sizes: S M L XL XXL

CLIMASHIELD®



CAVIAR BLACK



MERLOT



SKYDIVER



LEMON CURRY

KETIL WM'S

Innovated women's version of long zipper hooded jacket made of synthetic CLIMASHIELD® Apex insulation.

Lightweight, warm and packable jacket.

- Two outer and four inner pockets
- Anatomically shaped sleeves with soft elastic hem
- Anatomic draw cord hem
- Anatomically shaped hood with elastic hem
- Packable into the inner pocket

Material: Pertex Quantum Air
100% Nylon 40D miniripstop

Insulation: Climashield® Apex 67 g/m²

Weight: (M) 374 g

Sizes: S M L XL

CLIMASHIELD®



VALLIANT POPPY



LEMON CURRY



CAVIAR BLACK



SKYDIVER

KETIL TPG

Long zipper hooded jacket made of synthetic Climashield® Apex insulation.

Lightweight, warm and packable jacket.

- Two outer pockets, four inner pockets
- Anatomically shaped sleeves with soft elastic hem
- Anatomic draw cord hem
- Adjustable hood with inner collar
- Packable into the inner pocket

Material: 2-Layer GORE-TEX® Infinium™

Insulation: Climashield® Apex 67 g/m²

Weight: [M] 438 g

Sizes: S M L XL XXL



CLIMASHIELD®



HAWAIIAN SURF / WARM OLIVE

KETIL PANTS

Warm trousers with a raised waist, insulated with CLIMASHIELD® Apex.

- Reinforced exposed parts
- Anatomically shaped legs with elastic hem
- Full length openable zipper with two sliders
- Adjustable braces

Material: Pertex Quantum Air
100% Nylon 40D miniripstop

Insulation: Climashield® Apex 67 g/m²

Weight: (M) 550 g

Sizes: S M L XL XXL

CLIMASHIELD®



BLACK

SPIKE

A hybrid insulated hooded jacket. Uses the features of lightweight durable softshell and the revolutionary insulation fabric Polartec® Alpha® Direct, which provides high level of breathability.

- Anatomically shaped sleeves with thumb-loop anchors
- Four outer pockets
- Anatomic hem
- Draw cord at the hips
- Anatomically shaped hood with insulated collar

Material: Pertex Quantum Air
100% Nylon 40D miniripstop

Insulation: Polartec® Alpha® Direct 120 g/m²

Weight: (M) 389 g

Sizes: S M L XL XXL



BLACK / GREY PINSTRIPE



LEMON CURRY / GREY PINSTRIPE



MERLOT / ROIBOS TEA

TRANGO

Technical contour-fit jacket made of durable non-membrane material that offers great breathability, moisture management and elasticity.

Suitable for climbing, mountaineering, alpine skiing or hiking.

- Anatomically shaped sleeves with thumb loops and elastic hem
- Anatomically shaped hood with elastic hem
- Four outer, two inner pockets
- Anatomic hem
- Draw cord at the hips

Material: 89% Polyamid + 11% Spandex

Weight: (M) 475 g

Sizes: S M L XL XXL



TURKISH TILE / CARBON



CARBON / CAVIAR BLACK



FIERY RED / CARBON



ANTIQUE MOSS / CARBON

TRANGO WM'S

A versatile Wm's jacket made of durable non-membrane material offers great breathability, moisture management and elasticity.

Suitable for climbing, mountaineering, alpine skiing or hiking.

- Anatomically shaped sleeves with thumb loops and elastic hem
- Anatomically shaped hood with elastic hem
- Three outer pockets
- Anatomic hem
- Draw cord at the hips

Material: 89% Polyamid + 11% Spandex

Weight: (M) 428 g

Sizes: S M L XL



CAVIAR BLACK / CARBON



TURKISH TILE / ANTIQUE MOSS



TOMATO RED / FIERY RED

CRUX WS PANTS

Technical pants made of GORE-TEX Infinium™ WINDSTOPPER®.

Suitable for climbing, mountaineering, alpine skiing, Nordic skiing, or hiking.

- Two outer pockets
- Two cargo pockets with integrated phone/GPS pocket
- Ventilation system on the thighs
- Anatomically shaped knees
- Adjustable belt
- Ready for use with suspenders as well
- Reinforced ankles
- Short zippers on pants allow to fit them over ski boots



Material: GORE-TEX Infinium™ WINDSTOPPER®

Weight: (M) 526 g

Ret: < 5,00 m².Pa.W⁻¹

Sizes: S M L XL XXL



CARBON

CRUX PANTS

Pants made from polyamide material, offering great mechanical properties, moisture management and elasticity.

The non-membrane composition makes these pants ideal for spring to autumn use.

- Four outer pockets
- Two cargo pockets with integrated phone/GPS pocket
- Anatomically shaped knees
- For use with suspenders
- Integrated belt



TURKISH TILE / CARBON

Material: 89% Polyamid + 11% Spandex

Weight: (M) 427 g

Sizes: S M L XL XXL



KHAKI



BLACK

CRUX WS WM'S PANTS

Technical pants made of GORE-TEX® INFINIUM™ WINDSTOPPER®.

Suitable for climbing, mountaineering, alpine skiing, Nordic skiing, or hiking.

- Two outer pockets
- Two cargo pockets
- Ventilation system on the thighs
- Anatomically shaped knees
- Adjustable belt
- Reinforced ankles
- Short zippers on pants allow to fit them over ski boots



CAVIAR BLACK



Material: GORE-TEX Infinium™ WINDSTOPPER®

Weight: (M) 482 g

Ret: < 5,00 m².Pa.W⁻¹

Sizes: S M L XL

CRUX WM'S PANTS

A wm's version of pants made of polyamide material, offering great mechanical properties, moisture management and elasticity.

The non-membrane composition makes these pants ideal for spring to autumn use.

- Two outer pockets
- Two cargo pockets
- Anatomically shaped knees
- For use with suspenders or a belt



CARBON

Material: 89% Polyamid + 11% Spandex

Weight: (M) 362 g

Sizes: S M L XL

QUALIDO PANTS

Anatomically shaped rock climbing pants.

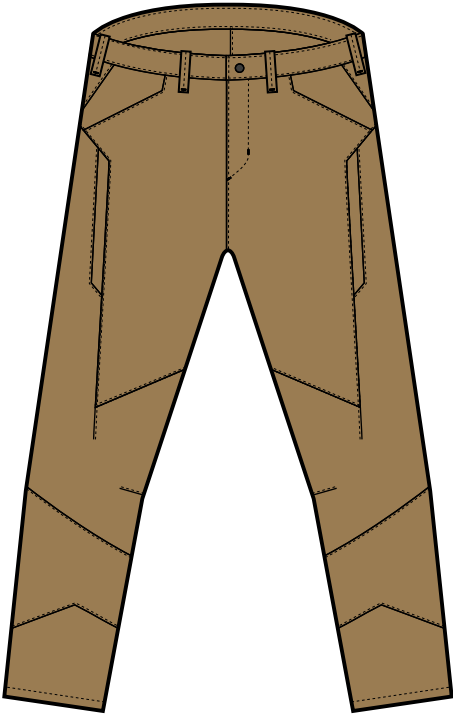
Narrow fit contoured pants made of durable elastic lightweight material.

- Two outer pockets
- Two zippered thigh pockets with integrated phone pocket
- Anatomical shape
- Integrated waist belt

Material: 88% Polyamid
12% Spandex

Weight: (M) 328 g

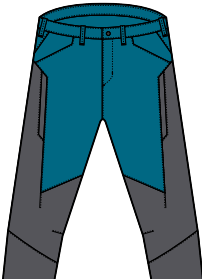
Sizes: S M L XL XXL



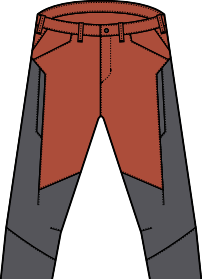
COYOTE



GREY PINSTRIPE



CRYSTAL TEAL / GREY PINSTRIPE



ROIBOS TEA / GREY PINSTRIPE

VEGA JACKET

A minimalist ultralight jacket made of latest GORE-TEX® Infinium™ fabric.

Totally windproof, water resistant and extremely breathable jacket in slim fit and with long sleeves designed for high performance activities such as biking or cross country skiing.

- AquaGuard® Vislon 3 mm front zipper
- Hood with one-touch adjusting
- One outer pocket
- Anatomically shaped sleeves
- Draw cord at the hips
- Anatomic hem
- 13 mm "Micro Tape"
- Reflective prints for better visibility

Material: 2-Layer GORE-TEX® Infinium

Weight: (M) 170 g

Ret: < 2,50 m².Pa.W⁻¹

Sizes: S M L XL XXL



FLAME



WARM OLIVE

ENDORPHIA JACKET

A very lightweight, fully windproof and water resistant jacket made of the lightest GORE-TEX® Infinium™ fabric.

Looser fit and two roomy pockets for diverse activities and conditions.

- Two outer pockets
- Anatomic shaped sleeves
- Draw cord at the hips
- Anatomic hem
- Hood with one-touch adjustment
- Aquaguard®Vislon 3mm front zipper
- 13 mm Micro Tape

Material: 2-Layer GORE-TEX® Infinium™

Weight: (M) 191 g

Ret: < 2,50 m².Pa.W⁻¹

Sizes: S M L XL XXL



HAWAIIAN SURF



WARM OLIVE / HAWAIIAN SURF



FLAME / WARM OLIVE

NEBBA

An ultralight and packable wind resistant jacket partly insulated with breathable Polartec® Alpha® Direct.

An essential part of back-up equipment for light and fast activities in cold conditions. A model used by the Mountain Rescue Service of the Czech Republic.

- Insulated body and shoulder area
- Double layer hood
- Two outer pockets, inner pocket
- Compressible into inner pocket

Material: Pertex Quantum Air
100% Nylon 40D miniripstop

Insulation: Polartec® Alpha® Direct 90 g/m²

Weight: (M) 328 g

Sizes: S M L XL XXL



SKYDIVER / BLACK



VALIANT POPPY



LEMON CURRY

NEBBA TPG

TPG means Top Performance Gear and you will see it more often in the next collections. These will be models that we are sure are completely unique in their function and we want to push their performance to the maximum level by using the best materials.

Unlike the standard Nebba, Nebba TPG is made of 2-Layer GORE-TEX® Infinium™. Totally windproof, water resistant, but very breathable jacket partly insulated with Polartec® Alpha® Direct.

- Insulated body and shoulder area
- Double layer hood
- Two outer pockets, inner pocket
- Compressible into inner pocket

Material: 2-Layer GORE-TEX® Infinium™

Insulation: Polartec® Alpha® Direct 90 g/m²

Weight: (M) 325 g

Sizes: S M L XL XXL



HAWAIIAN SURF / WARM OLIVE

NEBBA WM'S

A women's version of packable ultralight wind resistant jacket partly insulated with breathable Polartec® Alpha® Direct.

An essential part of back-up equipment for light and fast activities in cold conditions.

- Insulated body and shoulder area
- Double layer hood
- Two outer pockets, inner pocket

Material: Pertex Quantum Air
100% Nylon 40D miniripstop

Insulation: Polartec® Alpha® Direct 120 g/m²

Weight: (M) 311 g

Sizes: S M L XL



POLARTEC®
Alpha®



SKYDIVER



MERLOT



LEMON CURRY

AIRA

An ultra-lightweight hooded jacket easily packable to the size of your palm, weighing just 130 grams.

Ideal as a spare jacket, in situations when each gram counts.

- Two outer pockets, one with MP3 opening
- 3 mm Vislon front zipper
- Anatomically shaped sleeves with thumb-loop anchors
- Packable into pocket
- Draw cord at the hips
- Anatomic hem.

Material: Pertex Quantum Air
100% Nylon 40D miniripstop

Weight: (M) 142 g

Sizes: S M L XL



MERLOT



SKYDIVER



LEMON CURRY



BLACK

AIRA WM'S

Minimalist and ultra-lightweight jacket designed in women's fit.

Ideal as a spare jacket, in situations when each gram counts.

- Two outer pockets, one with MP3 opening
- 3 mm Vislon front zipper
- Anatomically shaped sleeves with thumb-loop anchors
- Packable into pocket
- Draw cord at the hips
- Anatomic hem.

Material: Pertex Quantum Air
100% Nylon 40D miniripstop

Weight: (M) 126 g

Sizes: S M L XL



BLACK



VALIANT POPPY



LEMON CURRY

VERSO

A new version of casual fit multi-purpose insulated jacket. Uses the features of revolutionary insulation fabric Polartec® Alpha® and provides a high level of breathability.

- Anatomically shaped sleeves
- Two outer pockets, one inner pocket
- Anatomic hem
- Draw cord at the hips
- Hood integrated in the collar
- Anatomic shaped sleeves with elastic cuffs
- Packable into the inner pocket

Material: Pertex Quantum Air
Polartec® Alpha® 100 g/m²
100% Nylon 40D miniripstop

Weight: (M) 543 g

Sizes: S M L XL XXL



LEMON CURRY



MERLOT



BLACK

ODIN

Anorak jacket made out of classic cotton material – Ventile®.

Due to well balanced mechanical resistance, weatherproofness and breathability, this jacket is suitable for various outdoor purposes.

- Anatomically shaped sleeves
- Anatomically shaped Velcro™ cuffs
- Two outer pockets, arm pocket
- Roomy front pocket with integrated phone / iPod / GPS pocket
- Hood with one-touch adjustment
- Laminated brim
- Dual headed side zipper for ease of use and ventilation
- Anatomic draw cord hem

Material: 100% cotton Ventile®

Weight: (M) 580 g

Sizes: S M L XL XXL

Ventile®



OLIVE



CINNAMON



BLACK NAVY



NATURAL

FRIGG WM'S

A women's classic Anorak jacket made of outstanding Ventile® fabric.

Due to well balanced mechanical resistance, weatherproofness and breathability, this jacket is suitable for various outdoor purposes.

- Sleeves with Velcro™ cuffs
- Two outer pockets
- Roomy front pocket with integrated phone / iPod / GPS pocket
- Hood with one-touch adjustment
- Laminated brim
- Side zipper for ease of use and ventilation
- Anatomic draw cord hem

Material: 100% cotton Ventile®

Weight: (M) 485 g

Sizes: S M L XL

Ventile®



NATURAL



OLIVE



BLACK NAVY

LOKE

A new generation of versatile outdoor jacket for wide range of use.

Due to well balanced mechanical resistance, weatherproofness and breathability, this jacket is suitable for various outdoor purposes.

- Sleeves with anatomically shaped Velcro™ cuffs
- Four outer pockets
- Hood with one-touch adjustment in the collar
- Integrated ventilation system in the armpits
- Anatomic draw cord hem

Material: 100% cotton Ventile®

Weight: (M) 616 g

Sizes: S M L XL XXL

Ventile®



NATURAL



OLIVE



BLACK NAVY



CINNAMON

STORM

A versatile jacket made of three layer GORE-TEX® fabric.

Very good balance between low weight and durability.

- AquaGuard® Vislon front zipper
- Sleeves with Velcro™ cuffs
- Two outer pockets, laminated inner pocket
- Hood with one-touch adjustment
- Laminated brim
- Anatomic draw cord hem
- 13 mm "Micro Tape"

Material: 3-Layer GORE-TEX®

Weight: (M) 488 g

Ret: < 7,50 m².Pa.W⁻¹

Sizes: S M L XL XXL 3XL



CAVIAR BLACK



WINDSOR WINE



ROASTED PECAN

STORM PANTS

Outdoor pants for multi-purpose use. This model combines excellent protection against bad weather with low weight and volume.

- Anatomically shaped knees
- 13 mm "Micro Tape"
- Long side zippers with two sliders
- Upper slider can be used for ventilation
- Two outer zipped pockets
- Trouser leg adjustment by press button
- Reinforced ankles and trouser hem
- Elastic band with press button
- Ready for use with suspenders



Material: 3-Layer GORE-TEX®

Weight: (M) 427 g

Ret: < 7,50 m².Pa.W⁻¹

Sizes: S M L XL XXL



CAVIAR BLACK

ULTRALIGHT PANTS

Lightweight pants for multi-purpose use. This model combines excellent protection against bad weather with very low weight and volume.

- Anatomically shaped knees
- 13 mm "Micro Tape"
- Short zippers at bottom part of legs
- Outer pocket
- Cord adjustment around ankles



Material: 3-Layer GORE-TEX®

Weight: (M) 188 g

Ret: < 7,50 m².Pa.W⁻¹

Sizes: S M L XL



CAVIAR BLACK

TIND

A very lightweight and packable wind resistant jacket made of elastic Nylon material with DWR treatment.

Looser fit and two roomy pockets for diverse activities and conditions.

- Two outer pockets
- Anatomic shaped sleeves with elastic hem
- Packable into pocket
- Draw cord at the hips
- Anatomic hem
- Hood with one-touch adjustment

Material: 100% Nylon
Weight: (M) 160 g
Sizes: S M L XL XXL



CAVIAR BLACK



SEA TURTLE

LOFOTEN

Proven Ventile® cotton on the front and side of the trousers provides water resistance, protection when used in bushy terrain and against sparks in open flames.

The elastic polyamide material used on the upper part and the back of the trousers makes it possible to achieve a close-fitting and at the same time very comfortable cut that does not restrict movement.

Material: 100% cotton Ventile®
100% Polyamid Soft Shell

Weight: (M) 400 g

Sizes: S M L XL XXL

- Two outer pockets
- Two thigh pockets with integrated phone/GPS pocket
- Anatomically shaped knees



BLACK NAVY/BLACK



BLACK/BLACK



OLIVE/KHAKI

NUUK

Hooded sweatshirt made of Polartec® Thermal Pro®.

Insulation layer designed to be cozy and keep you warm.

- Two outer pockets, chest pocket
- Flatlock seams
- Loose fit provides enough space for a base layer

Material: Polartec® Thermal Pro®

Weight: (M) 666 g

Sizes: S M L XL XXL



SKY CAPTAIN



FORGED IRON

FEMUND

Hooded sweatshirt made of Polartec® Power Stretch®.

Great insulation layer in combination with Serak sweatshirt or another base layer.



Material: Polartec® Power Stretch®

Weight: (M) 398 g

Sizes: S M L XL XXL

- Two outer pockets, chest pocket
- Flatlock seams
- Anatomic shape
- Forward shifted lateral seams



ROIBOS TEA

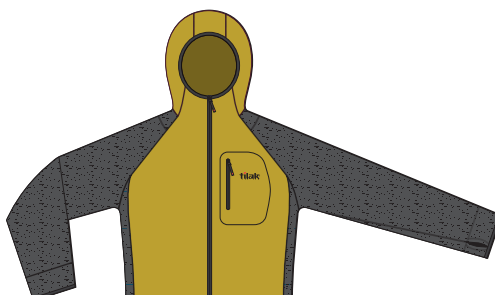
MAROCCAN BLUE / CHARCOAL



BLACK



ANTIQUE MOSS / CHARCOAL



FEMUND WM'S

A women's version of the hooded sweatshirt made of Polartec® Power Stretch®.

Great insulation layer in combination with Serak sweatshirt or another base layer.



Material: Polartec® Power Stretch®

Weight: (M) 340 g

Sizes: S M L XL

- Two outer pockets, chest pocket
- Flatlock seams
- Anatomic shape
- Forward shifted lateral seams



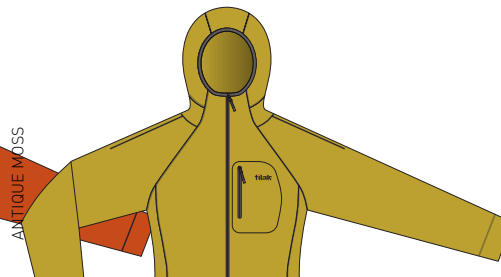
CRYSTAL TEAL / MOROCCAN BLUE



BLACK



ROIBOS TEA



ANTIQUE MOSS

SERAK

A long-sleeved anatomic ski top that takes full advantage of the superior comfort and performance of Polartec® Power Stretch® material. Recommended for use in combination with Serak pants.



Material: Polartec® Power Stretch®

Weight: (M) 290 g

Sizes: S M L XL XXL

- Seamless collar
- Flatlock seams
- Anatomic shape
- Forward shifted lateral seams

Pants made of Polartec® Power Stretch® suitable for all kinds of outdoor activities. Fully compatible with Serak pullover.

Material: Polartec® Power Stretch®

Weight: (M) 250 g

Sizes: S M L XL XXL

- Drawstring waist
- Flatlock seams
- Anatomic shape



ROIBOS TEA / CHARCOAL



ANTIQUE MOSS



MOROCCAN BLUE / CHARCOAL

BLACK

SERAK WM'S

A women's version of a long-sleeved anatomic ski top that takes full advantage of the superior comfort and performance of Polartec® Power Stretch® material. Designed for the contours of the female body.



Material: Polartec® Power Stretch®

Weight: (M) 257 g

Sizes: S M L XL

- Seamless collar
- Flatlock seams
- Anatomic shape
- Forward shifted lateral seams

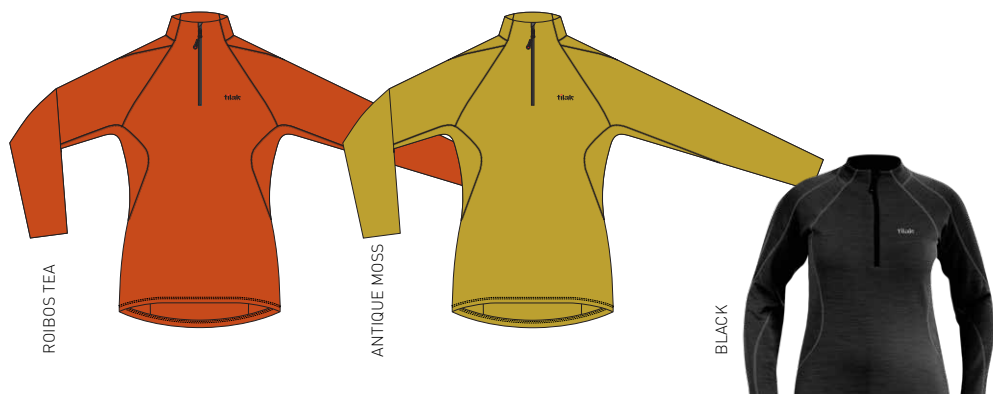
A women's version of pants made of Polartec® Power Stretch® suitable for all kinds of outdoor activities. Fully compatible with Serak pullover.

Material: Polartec® Power Stretch®

Weight: (M) 212 g

Sizes: S M L XL

- Drawstring waist
- Flatlock seams
- Anatomic shape



CRYSTAL TEAL / MOROCCAN BLUE



BLACK

MERA

Midweight zip neck base layer top for activities in cooler temperatures.

Deltapeak®TL by Teijin provides a soft hand, stretch, thermal comfort and moisture management

DELTAPEAK®

Material: Teijin Deltapeak®TL
 Weight: (M) 218 g
 Sizes: S M L XL XXL

- Flatlock construction improves next-to-skin comfort
- No underarm seam construction



CHARCOAL / BLACK



BLACK



METHYL BLUE



CHARCOAL

MERA HOODED

Midweight zip neck base layer top for activities in cooler temperatures.

Deltapeak®TL by Teijin provides a soft hand, stretch, thermal comfort and moisture management

DELTAPEAK®

Material: Teijin Deltapeak®TL

Weight: (M) 241 g

Sizes: S M L XL XXL

- Flatlock construction improves next-to-skin comfort
- No underarm seam construction



METHYL BLUE

CHARCOAL / BLACK



CHARCOAL



GTX MITTENS

Long insulated mittens for a wide range of use. Removable insert made of synthetic fur. Wrist adjustment. Pre-curved fingers. One-touch draw cord adjustment. Long forearm loop. Various colors.



Material: 3-Layer GORE-TEX®
Weight: 200g
Sizes: UNI

BALACLAVA

An anatomically designed, breathable balaclava made of elastic material.



Material: Polartec® Power Stretch®
Weight: 55g
Sizes: UNI

BEANIE

All-round use beanie made of Polartec® Power Stretch® material.



Material: Polartec® Power Stretch®
Weight: 30g
Sizes: L XL

CAP

A close-tight cap made of Polartec® Power Stretch® material.



Material: Polartec® Power Stretch®
Weight: 35g
Sizes: L XL